

This manual contains important information on installation, operation and regular maintenance about the supplied Optitech Product. All OptiTech Products are designed & manufactured to comply with State and Commonwealth Government Regulations relevant to electrical safety standards and Electro-Magnetic Compatibility (EMC). These instructions form an integral part of regulatory compliance to ensure your safety. If you have any questions regarding the suitability of application, installation, use or performance of this product please contact OptiTech Phone:1300 853 365; Email: sales@optitech.com.au; www.optitech.com.au

1. Model / Product Codes

1.1 Primary Code

OPT-MKB-2FT-8W-S
OPT-MKB-2FT-8W-EMS
OPT-MKB-4FT-10W-S
OPT-MKB-4FT-10W-EMS
OPT-MKB-4FT-16W-S
OPT-MKB-4FT-16W-EMS
OPT-MKB-4FT-22W-S
OPT-MKB-4FT-22W-EMS
OPT-MKB-5FT-28W-S
OPT-MKB-5FT-28W-EMS

2. SAFETY WARNINGS

- 2.1. Before installation & use - read the instructions fully; keep for future reference
- 2.2. This product must be installed by a licensed electrician in accordance with latest version of AS/NZS 3000 - Electrical Installations (known as the Australian/New Zealand Wiring Rules)
- 2.3. If the packaging & contents appear to be damaged, do not continue installation & return it to point of purchase.
- 2.4. It is recommended that this product be used on a circuit protected by an Earth Leakage Circuit Breaker or Safety Switch.
- 2.5. Before attempting to maintain or repair or replace a light fitting, always ensure the circuit is not energised (the mains switch is turned OFF) and ensure lamps are fully cooled.
- 2.6. The fitting must be so installed that it is separated from the surfaces and objects it illuminates, by at least 0.1m to prevent undue temperature rise that may cause ignition and/or deterioration.
- 2.7. Install well clear of any heat sensitive, flammable and explosive materials or objects.
- 2.8. Allow suitable ventilation & air flow around the light fitting.
- 2.9. DO NOT COVER - Under no circumstances, the fitting, driver, lamp and /or any parts of them, shall be covered with any type of insulation material or any other material
- 2.10. Install clear of curtains or drapes.
- 2.11. Do not immerse the light fitting, or any part of it in water or any other liquids.
- 2.12. Always ensure light fitting is fully assembled and all covers are in place before connecting to the power supply.
- 2.13. Regularly inspect the light fittings for any damage. If found defective in any way immediately cease use.
- 2.14. Do not attempt to modify this light fitting in any way from the condition as supplied.
- 2.15. Before making fixing hole(s) or cut-out, check that there are no obstructions hidden beneath the mounting surface such as pipes or cables.
- 2.16. Use only approved extension leads & always fully uncoil cord, ensure socket connections are protected from water & wet weather.
- 2.17. Ensure bare hands do not contact any part of the light fitting & its ancillary control gear, while in operation (turned ON).

- 2.18. The LED driver is a class I item & must be effectively earthed. When mounting multiple fixtures to conductive structures, it is recommended that the structure is earthed.
- 2.19. Always dispose of packaging in an environmentally friendly manner.

3. PRECAUTIONS & LIMITATIONS

- 3.1. Location and normal operating position: Suitable for Indoors / outdoor locations, Ingress Protection rated at IP65; Horizontal
- 3.2. Positioning of Light Fitting:
 - 3.2.1. Must be used as interior/exterior light source & installation clearances must be maintained in the ceiling surface or roof, according to wiring rules AS/NZS 3000.
 - 3.2.2. The individual light fitting should be positioned on rigid horizontal ceiling surface (refer also to 'Safety Warnings' above). It is suitable for direct mounting on normally flammable surface
 - 3.2.3. Mounting Methods: Surface mounted (with appropriate accessory)
 - 3.2.4. Ensure the installation hardware is suitable to support the weight of the Light Fitting under any static condition. If the structure is subject to shock loadings, this Light Fitting may not be appropriate for this application. Ensure that a minimum clearance all around is provided between the luminaire and structural members, thermal insulation and any other substance, in accordance with current version AS/NZS 3000. The Light Fitting must be installed to ensure that no part of the light fitting or the driver is not covered with any combustible materials or insulation; minimum spacings nominated for these materials are mandatory. Abutment to the Light Fitting trim with any thermal insulation material must be within the maximum permissible distance in accordance with the regulation; No element of the Light Fitting's thermal management fins / heat sink is covered.
- 3.3. Fault finding & Circuit Testing: The integrity of the circuit MUST NOT be checked with a 'megger' because the injection of 1000-1500V may irreparably damage the components in the LED driver.
- 3.4. Dimming: All model dimmable (refer para 1.1) (THE LED Driver can be used with most type of phase control type dimmers. Do not mix with other load types on a dimmer circuit. Contact us for dimmer compatibility chart.
- 3.5. 24/7 Operations: This LED Light Fitting is suitable for continuous operations i.e., 24 hours a day and 7 days a week.
- 3.6. Thermal Protection: The driver is thermally protected. Refer to maximum case temperature in the product specification.
- 3.7. Earthing Conductive Structure: When mounting multiple fixtures to conductive structures, it is recommended that the structure is earthed.

This manual contains important information on installation, operation and regular maintenance about the supplied Optitech Product. All OptiTech Products are designed & manufactured to comply with State and Commonwealth Government Regulations relevant to electrical safety standards and Electro-Magnetic Compatibility (EMC). These instructions form an integral part of regulatory compliance to ensure your safety. If you have any questions regarding the suitability of application, installation, use or performance of this product please contact OptiTech
 Phone:1300 853 365; Email: sales@optitech.com.au; www.optitech.com.au

4. CARE & CLEANING

Warning: Do not open & clean any part of the internal fitting or gear tray as even when its off it may carry current capable of causing electric shock.

- 4.1. Turn off the fitting first by isolating the circuit at the main board.
- 4.2. For cleaning, wipe over the exterior only with a damp cloth & allow to dry completely before turning the unit back on again.
- 4.3. Do not use strong chemicals, acidic or hydrocarbon-based solvents or abrasive cleaning compounds on any part of the fitting

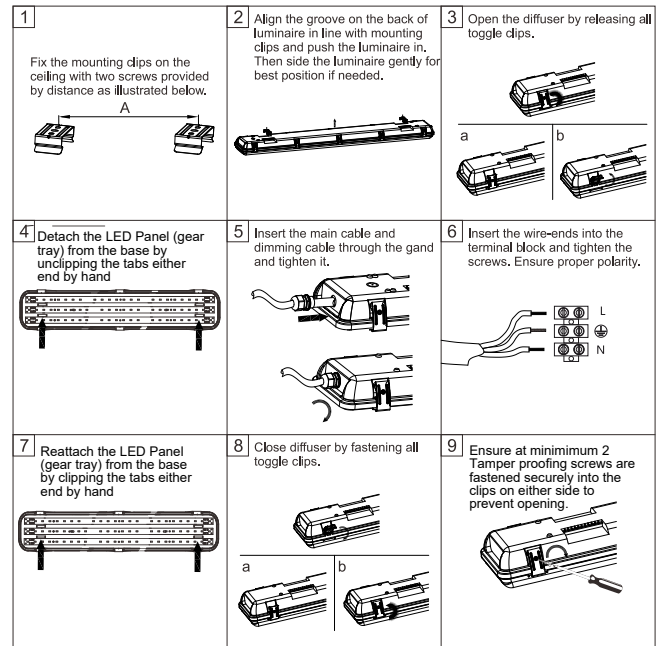
5. REPLACEMENT PARTS & LAMPS

5.1. There are no user replaceable/repairable components in or with this luminaire.

6. INSTALLATION PROCEDURE

- 6.1. Ensure the power to the circuit being used is isolated and will stay isolated until the job is complete-Lock out & Tag out.
- 6.2. Remove the light fittings and all components from the carton & ensure all packaging materials are fully removed before usage. Ensure that the components, driver & controllers, accessories that may have been separately packed and shipped are all available and suitable ones for the light fitting and installation on hand.
- 6.3. Contents of the carton are:
 - 6.3.1. 1 x Light fitting c/w built in control gear
 - 6.3.2. Mounting kit with 2x Clips, Tamper proofing screws, Fixing screws and plugs in a polyethylene bag.
 - 6.3.3. This installation & user manual
- 6.4. Route the supply wiring to reach the intended final installed position of the light fitting. The supply wiring chosen for this installation is to be selected, installed and tested in accordance with AS/NZS3000-Wiring Rules.
- 6.5. Remove the diffuser cover, unclip the gear tray
- 6.6. Using the base of the fitting as template mark and pre-drill screw holes.
- 6.7. Fit the two clips and secure them with appropriate fasteners firmly to the mounting surface.
- 6.8. Route the supply wiring through the base of the fitting ensuring that it can reach the input terminals without undue strain.
- 6.9. Secure the entry position by tightening the cable gland.
- 6.10. Fix the base of light fitting securely in position with the help of two clips already secured to the mounting position.
- 6.11. Connect the supply wires and dimming wires (prepared as per AS 3000) and secure into the right terminal marked L, N, E and Dim+, Dim-.
- 6.12. Place the gear tray in position on to the base and clip the gear tray back in using the 2 tabs on both sides.

- 6.13. Replace the diffuser cover and secure with clips provided.
- 6.14. Secure fitting from tampering with tamper proof screws provided (Figure 9)
- 6.15. Remove the Lock-Out Tag; Energise the circuit at the switchboard; turn the switch to 'ON'.



7. TECHNICAL INFORMATION

- 7.1.1. Normal Operating position: Horizontal
- 7.1.2. Electrical Class: I
- 7.1.3. Electrical Safety: Driver Complies with: IEC 61347-2-13
- 7.1.4. EMC: Level 2; Complies AS/NZS CISPR 15
- 7.1.5. Supply: 220-240V ~ 50/60 Hz to Driver;
- 7.1.6. Ingress Protection: IP65

8. DISCLAIMER:

- 8.1.1. OptiTech reserves the right to change specifications or designs described in these instructions without notice and without obligation. Please contact OptiTech or visit website www.optitech.com.au for product updates, warranty conditions etc., before purchase and / or installation.
- 8.1.2. This document is subjected to E. & O.E

This manual contains important information on installation, operation and regular maintenance about the supplied Optitech Product. All Optitech Products are designed & manufactured to comply with State and Commonwealth Government Regulations relevant to electrical safety standards and Electro-Magnetic Compatibility (EMC). These instructions form an integral part of regulatory compliance to ensure your safety. If you have any questions regarding the suitability of application, installation, use or performance of this product please contact Optitech Phone:1300 853 365; Email: sales@optitech.com.au; www.optitech.com.au

Warranty Terms & Conditions

FOR SALES IN AUSTRALIA AND NEW ZEALAND

With your new Optitech installation comes the quality assurance provided by the five (5) years Product Warranty, unless otherwise agreed to in writing or higher as stipulated in the product specifications (the “Warranty”).

The warranty is offered to you by Optitech Pty Ltd of 2/176 Euston Rd, Alexandria NSW 2015, Australia. Phone contact: 1300 853 365

Subject to the terms of this document, Optitech warrants to the owner of the Installation that Optitech will repair or replace, without charge Commercial Lighting product (the “Product”) excluding the labour and material associated with replacement if the Product fails due to any manufacturing defect during the first five (5) years.

This Warranty applies from the date of purchase for a period of five (5) years thereafter subject to the conditions set in this Warranty.

1. Definitions

- 1.1. **Australian Consumer Law** means the Australian consumer law set out in Schedule 2 to the Competition and Consumer Act 2010.
- 1.2. **Goods** mean the product or equipment that was purchased in Australia and listed in the **Applicable Product Ranges** below.
- 1.3. **Manufacturer, We or us** means Optitech International Pty Ltd ABN 13155134642.
- 1.4. **Supplier** means the authorized distributor or the licensed electrical contractor that sold you the Goods.
- 1.5. **You** means you, the original end-user purchaser of the goods.

2. Warranty Period and Details:

The products detailed above are covered by five (5) years product warranty against manufacturing faults and defects, provided that:

- 2.1. The product is properly installed, and installation is consistent with the manufacturer’s instructions and is installed by suitably trained and qualified installer.
- 2.2. The product is not subjected to any unauthorized modifications.
- 2.3. The product is only used for the purpose of illumination, in line with its designated purpose or the designated purpose of a luminaire of its general type.
- 2.4. Any faults or defects attributable to the misuse, abuse, accident or non-observance of the manufacturer’s instructions on the part of the user are specifically excluded.
- 2.5. Where a battery product is installed, the warranty period covers one (1) year.
- 2.6. This Warranty DOES NOT COVER:
 - 2.6.1. Damage caused by acts of god, or other incidents / occurrences beyond the control of Optitech, including without limitation, fire, theft, storms, floods.
 - 2.6.2. Damage caused by water or other forms of moisture being absorbed by the LED light fitting.
 - 2.6.3. Damage caused by chemical impact or other abuse including environmental factors, improper cleaning

solutions, damage from leaving substances such as bleach on the product.

- 2.6.4. Damage or problems caused by the use of an accessory, component or equipment not supplied by Optitech.

3. Extent of the Warranty

- 3.1. Optitech do not cover freight charges (including insurance) or travelling cost for repairs conducted by the customer.
- 3.2. Goods that prove defective within the Warranty Period by reason or improper workmanship or faulty material, we may, at our own discretion, either repair or replace the Goods without charge.
- 3.3. You will be responsible for any other costs associated with or arising out of the repair or replacement.
- 3.4. In the event of the Goods being replaced during the Warranty Period, the warranty on the replacement goods will expire on the same date as the Warranty Period of the original goods they are replacing.
- 3.5. This warranty is not transferable

* Unless otherwise agreed to in writing or higher as stipulated in the product specifications

This is an extract of the Warranty Terms. Please contact us for full terms and conditions.



Warranty Online